

Overview of the Office of Research Assurances (ORA)

Levi O'Loughlin, PhD
Assistant Director, Biosafety Officer
Research Safety Program



Office of Research Assurances

ora.wsu.edu



WASHINGTON STATE
UNIVERSITY



Office of Research Assurances

Presidential Committees

Animal Welfare Program
(IACUC) ↗

Biosafety (IBC) ↗

Human Research
Protection Program
(IRB) ↗

Radiation Safety (RSC) ↗

Export Controls

Hazardous Materials
Shipping

Contact

Office of the Campus
Veterinarian ↗

Office of Research



myWSU ACCESS POLICIES ©

OFFICE OF RESEARCH ASSURANCES | WSU

OFFICE OF RESEARCH ASSURANCES

ENSURING SAFE, COMPLIANT, AND ETHICAL RESEARCH

The Office of Research Assurances (ORA) fosters responsible
research practices.



ora.wsu.edu



Overview of ORA

1. Introduction
2. Institutional Animal Care and Use Committee (**IACUC**)
3. Institutional Biosafety Committee (**IBC**)
4. Institutional Review Board (**IRB**)
5. Radiation Safety Committee (**RSC**)
6. Export Controls
7. Hazardous Materials Shipping (**HMS**)
8. Responsible Conduct of Research (**RCR**)
9. Conflict of Interest Committee (**COI**)
10. Contacts





Introduction

- ORA (est. 2002) is part of the overall effort of WSU to ensure responsible conduct of research.
- We work collaboratively with researchers and staff to stay in compliance with applicable internal and external policies and regulations.
- By staying in compliance we avoid funding delays, funding denials, unpublished research, and - in some cases fines - jail.



Our philosophy is centered on **customer service** and helping PI's and departments navigate the labyrinth of laws and policies that affect research at WSU.



Institutional Animal Care and Use Committee (IACUC)

Who Oversees Animal Welfare?



BPPM/SPPM



Office of the
Campus
Veterinarian



Animal
Welfare
Program



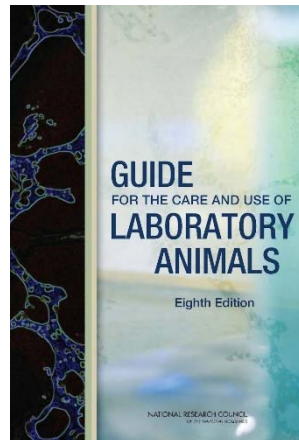
iacuc.wsu.edu



Institutional Animal Care and Use Committee (IACUC)

The IACUC provides **oversight of animals and animal care personnel** involved in research, teaching, and clinical education by ensuring that animal use is well-justified, designed to minimize discomfort or pain in animals, and is guided by scientific and educational relevance to human or animal health. To accomplish these goals, the IACUC...

- ensures animal welfare;
- provides training requirements - Principles of Animal Care & Occupational Health Training with Animals;
- is accredited by the Association for Assessment and Accreditation of Laboratory Animal Care (AAALAC); and
- strictly follows the Guide for the Care and Use of Laboratory Animals.



***Replacement
Reduction
Refinement***



Institutional Biosafety Committee (IBC)

Who Oversees Research With
Biological Materials?



BPPM/SPPM



Research Safety
Program

Biosafety Officer
& team



biosafety.wsu.edu



Institutional Biosafety Committee (IBC)

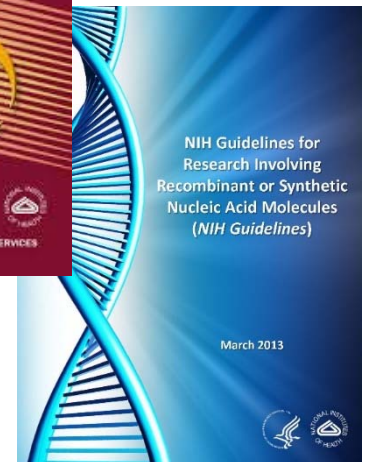
The IBC Reviews procedures for working with potentially hazardous biological materials including used in research:

- Genetically Modified Organisms (GMOs)
- Infectious Agents and Pathogens
 - Human
 - Animal
 - Plants
 - Environment
- Human Tissue and Cells



The IBC verifies containment practices & facilities

- Biosafety levels (BSL-1, -2, -3)





Institutional Review Board (IRB)

Who Oversees Human Subjects Research?



BPPM/SPPM



Human
Research
Protection
Program





Institutional Review Board (IRB)

The Institutional Review Board (IRB) is responsible for the review and approval of all research activities involving human subjects.

The IRB protects the rights and welfare of human subjects to ensure that all are treated in such a way as to minimize risk and avoid harm.

The guiding principles of the IRB are:

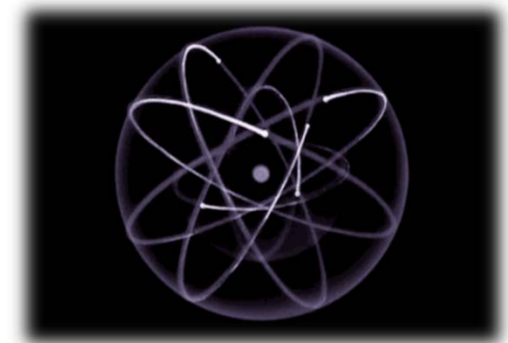
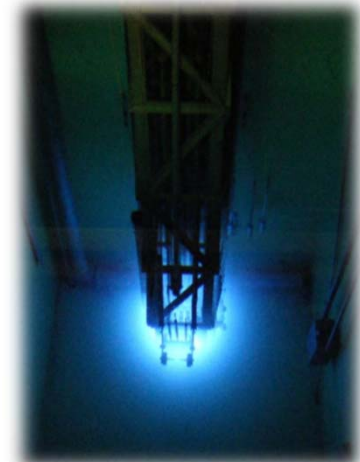


Respect for Persons
Beneficence
Justice



Radiation Safety Committee (RSC)

Who Oversees Radiation Safety?

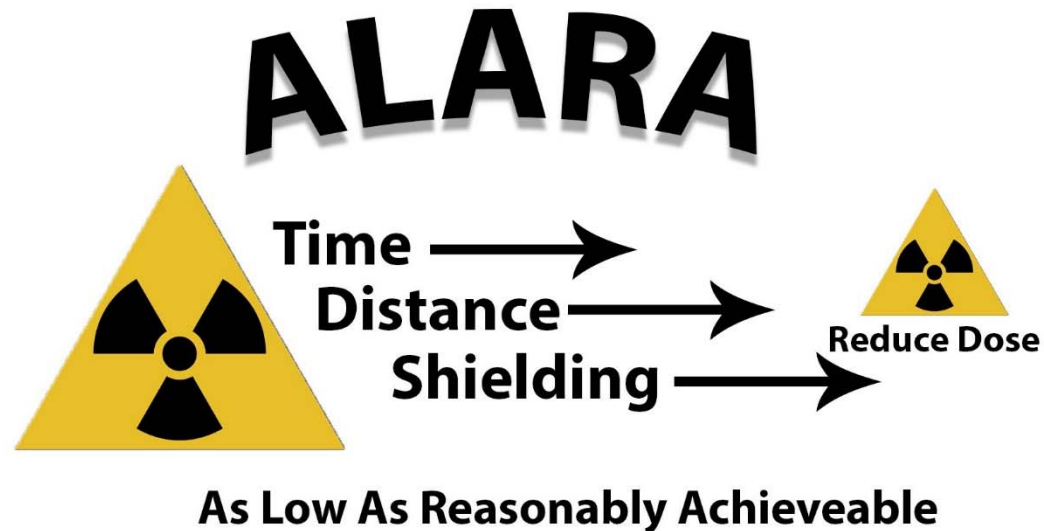


Research Safety Program
Radiation Safety Officer & team



Radiation Safety Committee (RSC)

The WSU Radiation Safety Office team and Radiation Safety Committee ensures the **safe use of radioactive materials** and **radiation machines**.





Radiation Safety Committee (RSC)

With the oversight and direction of the Radiation Safety Committee (RSC), the WSU Radiation Safety Program supports the University's teaching, research and outreach mission by administering a program that ensures the secure and safe use, transport and disposal of radioactive materials and radiation machines by...

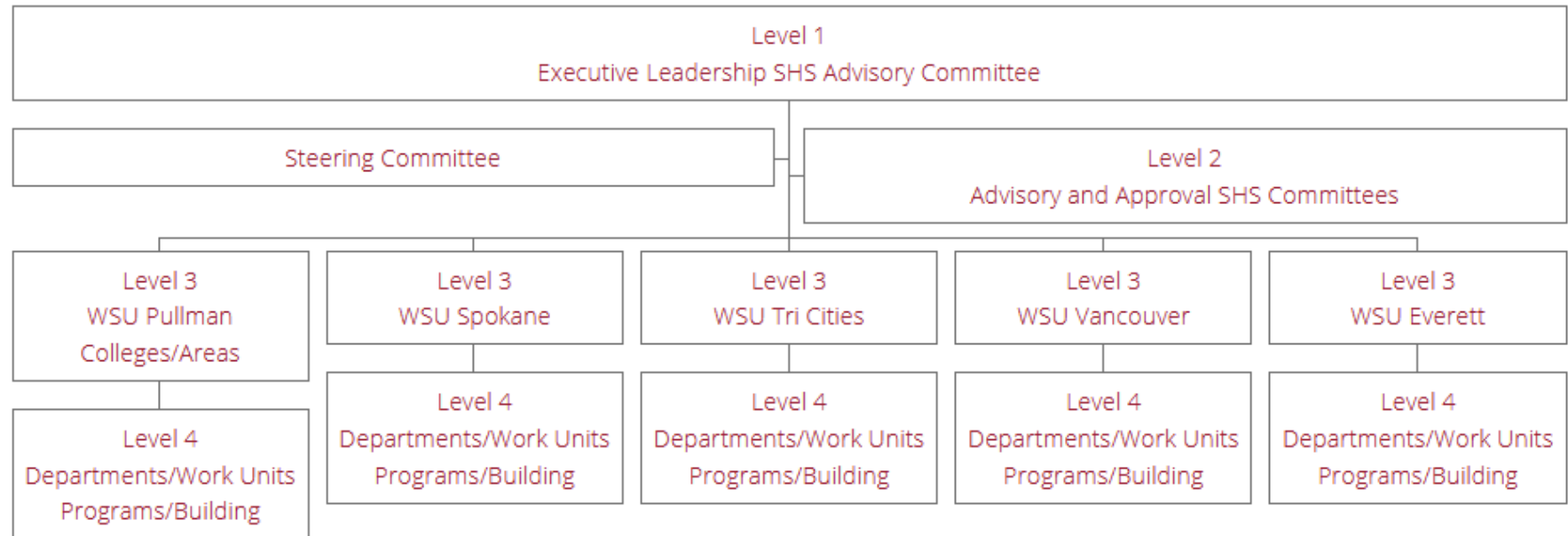
- reviewing procedures involving work with radioactive materials;
- addressing training requirements;
- monitoring radiation exposure of personnel;
- inventory and tracking radioactive materials;
- Managing radioactive waste disposal; and
- auditing labs for procedures, documentation, and properly working equipment.

rso.wsu.edu





Safety, Health, and Security Committees and Meetings



WSU has recently organized the Safety, Health, and Security committees, into a **4 level hierarchy**. Together, the committees **engage and coordinate** WSU administrators, campuses, colleges, departments, programs, students, and employees to **sustain and improve** WSU's **commitment to safety** and a culture that emphasizes safety.

president.wsu.edu/health-safety

Safety Policies and Procedures Manual (SPPM) 2.12



Export Controls

Who Oversees Export Controls?



These complex regulations govern:

1. The release of technology, technical data, & software to foreign nationals
2. The furnishing of defense services to foreign persons
3. The shipment or other transmission of items or defense articles outside the U.S.
4. The ability to transact with certain individuals, countries, & entities.

ora.wsu.edu/export-controls



Export Controls

Most research activities at WSU are **exempted** from the E.C. regulations through the **Fundamental Research Exemption**.



Responsibilities of PIs:

It is ultimately each individual's obligation to comply with Export Control laws. Review research in advance for potential Export Control restrictions.

- If a license is needed, apply BEFORE the project begins—license approvals take 3-6 months or longer.
 - In general, delivery of services to an embargoed country (e.g., Cuba, Iran, North Korea, Sudan, or Syria) is not allowed without a license.



Hazardous Materials Shipping (HMS)

Who Oversees the shipment of hazardous materials?



Is my shipment (potentially) hazardous?



ora.wsu.edu/what-is-a-hazardous-material



Hazardous Materials Shipping (HMS)

Is my shipment (potentially) hazardous?

- Dry Ice
- Laboratory Chemicals (including preservatives)
- Pathogens
- Animal or Human specimens
- Compressed gas cylinders
- Lithium Batteries (in & out of equipment)
- GMO's
- Radioactive materials

**If your material is hazardous or
you are not sure please call:**

ORA Hazmat Shipping 509-432-3869



Hazardous Materials Shipping (HMS)

WSU Hazmat shipping procedure:

- 1) ORA will process and ship all WSU hazmat shipments
- 2) Contact the hazmat shipping coordinator at **(509) 432-3869**
- 3) We will come directly to your location and collect your shipment
- 4) You will need to supply a completed Request for Shipment of Merchandise Form along with your shipment
- 5) ORA will generate a shipping label & verify that the contents are packaged and labeled according to the shipping regulations

All Hazmat shippers **must** be trained and certified per 49CFR Part 172

*If an individual knowingly or willfully violates a hazardous material shipping regulation this is considered to be a criminal violation.



ora.wsu.edu/what-is-a-hazardous-material



Who Oversees RCR?



Research Safety Program
Principal Investigators
Ultimately, everyone involved in research



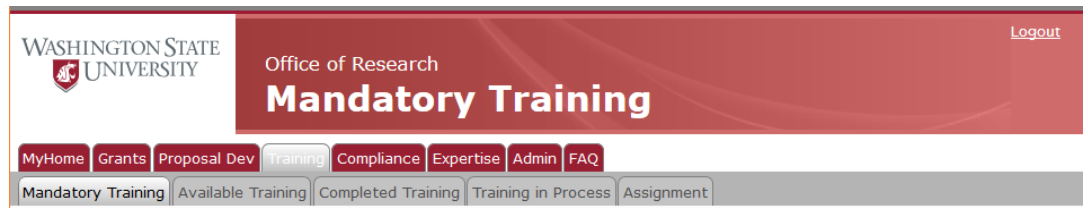


Responsible Conduct of Research (RCR)

RCR training is available on MyResearch for Faculty, staff, & students (anyone credited on a grant must have current training).

Retraining is required every 5 years, which covers:

1. Data Acquisition, Management, Sharing and Ownership
2. Use of Humans
3. Conflict of Interest and Commitment
4. Use of Animals
5. Research Misconduct
6. Publishing Practices and Authorship
7. Mentor/Trainee Relationships and Responsibilities
8. Peer Review
9. Collaborations



[Subscriptions](#) ▾

[Courses](#) ▾

[CE/CMEs](#)

[Tools](#)

[Support](#) ▾



[Register](#)

[Log In](#)

+1 888.529.5929 English ▾

Research Ethics and Compliance Training

myresearch.wsu.edu



Conflict of Interest (COI)

Who Oversees the Conflict of Interest?



Other funding agencies & professional organizations



COI
is administered
by the Office of
Research Support
& Operations
(ORSO)

research.wsu.edu/resources-researchers/operations-support/coi



Conflict of Interest (COI)

The Conflict Of Interest Committee

- increases accountability;
- adds transparency; and
- enhances regulatory compliance.



The committee

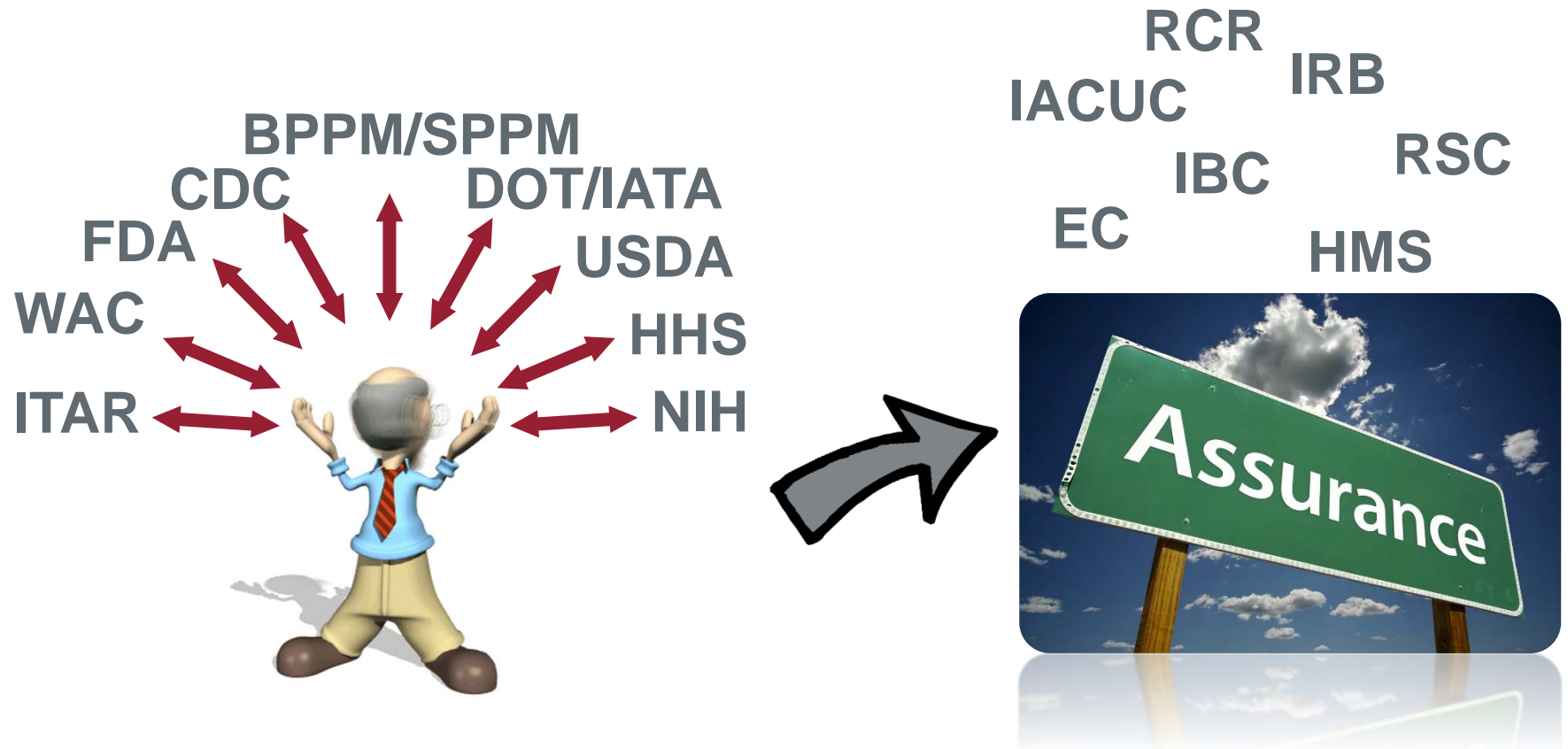
- provides a COI application & management plan, and
- reviews all pertinent documentation to
 - assess whether a potential conflict exists;
 - assess the extent of the conflict; and
 - manage, reduce, or eliminate the conflict before approval.

WSU wants to manage conflicts and potential conflicts in order to support entrepreneurship while protecting the reputation of WSU and its PI's.

research.wsu.edu/resources-researchers/operations-support/coi



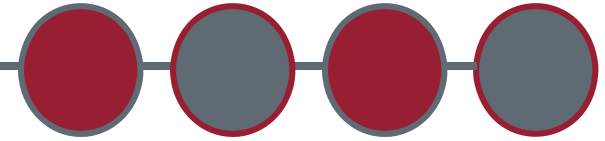
Office of Research Assurances





Office of Research Assurances

ora.wsu.edu



Administration

Mike Kluzik

Director

335-9553 mkluzik@wsu.edu

Patti Wilson

Administrative Assistant

335-1179 plwilson@wsu.edu

Sonja Hartwig

Document Control Officer & Training Coordinator

335-7183 katmere@wsu.edu

Research Safety Program

Levi O'Loughlin

Assistant director and biosafety officer

335-1585 levi.oloughlin@wsu.edu

Doug Cuellar

Export Controls & HAZMAT Shipping Coordinator

335-0039 dcuellar@wsu.edu

Kreta Johnson

Health Physicist

335-7058 kretaj@wsu.edu

Rey McGehee

Radiation Safety Officer

335-6763 rmcgehee@wsu.edu

Ryan Schwager

Assistant Biosafety Officer and HAZMAT Shipping Coordinator

335-4462 rschwager@wsu.edu

Human Research Protection Program

Joseph Crossno

Assistant Director

335-7195 joseph.crossno@wsu.edu

Malathi Jandhyala

Manager

335-3668 mjandhyala@wsu.edu

Heather Brackett

Human Subjects Review Coordinator

335-7646 mkluzik@wsu.edu

Neil Paterson

Program Assistant

335-7646 neil.paterson@wsu.edu

Animal Welfare Program

Alan Ekstrand

Assistant Director

335-7951 alan.ekstrand@wsu.edu

Carmen Haines

Program Specialist

335-1763 carmen.haines@wsu.edu

Kerri Kuykendall

Program Specialist

335-8043 kerri.kuykendall@wsu.edu

Ashley Williams

Program Specialist

335-5353 a.williams@wsu.edu