



# Human Resource Services

## Org Chart - At a Glance

Theresa Elliot-Chelsek  
VP/Chief Human Resource Officer

Jennifer Klein  
Sr. AVP - Modernization

### HCM- Modernization

Streamlines university functions through the implementation of enterprise software (Workday) for human resources, payroll and finance. Core Human Resource functions include: absence management, benefits administration, compensation, position description and recruitment management, position management, and time and leave administration.

Ann Monroe  
Director - Benefits

### Benefit Services

Responsible for implementing and overseeing a host of system-wide benefits related programs and services including benefits and retirement administration. Serves as primary contact to the Health Care Authority (HCA), Department of Retirement Systems (DRS), TIAA and the various benefit vendors. Responsible for ensuring WSU benefits and retirement programs are in compliance with state and federal regulations, including the Affordable Care Act (ACA) and 403b programs.

Jennifer Klein  
Sr. AVP - Employment Services

### Employment Services

Responsible for classification/compensation, talent acquisition, learning and organizational development and employee relations. Employment Services (ES) is responsible for providing consultation and guidance to executive leadership, managers, supervisors, and employees in compliance with applicable laws, policies, rules, regulations, and procedures. ES assists colleges/areas in strategic planning in key HR areas, as well as oversees the WSU Employee Engagement and Exit Survey programs.

Lisa Neal  
Director - Records

### Records and Compliance

Responsible for providing system-wide administration of personnel information For Administration professional, Classified, Faculty, Temp/Hourly workers, Graduate Students. Ensures Compliance with state and federal laws, such as I-9 processing.

Kendra Hsieh  
Director- LR/DS

### Labor Relations

Responsible for negotiating and administrating WSU's Collective Bargaining Agreements  
Providing labor relations services to leadership  
Manages the relationship between WSU bargaining units and associated Unions  
Responsible for ensuring program compliance with state and federal labor relations laws and rules

### Disability Services

Responsible for overseeing and providing system-wide disability and leave related programs  
medical and shared leaves  
long-term disability claims  
reasonable accommodations  
workers' compensation  
mandated drug and alcohol testing  
Responsible for compliance with state and federal laws and rules for associated programs.

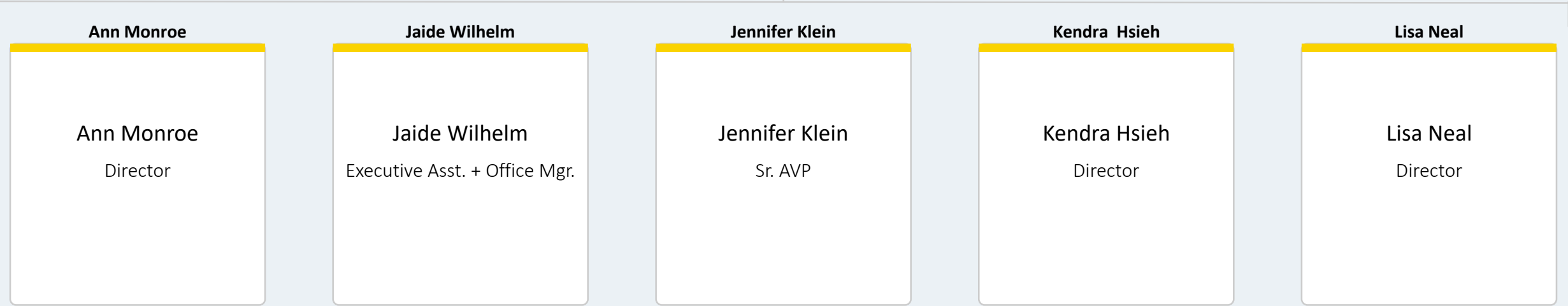
Jaide Wilhelm  
Exec Assist. & Office Manager

### Administration

Responsible for triaging all inquiries received through the front desk via phone, email and in-person visits. Responsible for WSU Employee Recognition Programs, including length of service, Crimson Spirit Award  
President's Excellence Award, Annual Quarter Century Club Breakfast, and the Annual Employee Recognition Reception.

Theresa Elliot-Cheslek

VP/CHRO



Ann Monroe

Director



Maria Royall

Benefits and Wellbeing

Christy Bogar

Fiscal Analyst

Melissa Young

HR Consultant

Sheila Kite

HR Assistant

Lucinda Smalldridge

HR Assistant

Annalesha Sims

HR Assistant

Jaide Wilhelm

Jaide Wilhelm

Executive Asst. + Office Mgr.

Leslie Brunelli



Theresa Elliot-Cheslek



Jaide Wilhelm



Anneliese McKnight

Office Assistant 3

Charles Holapa

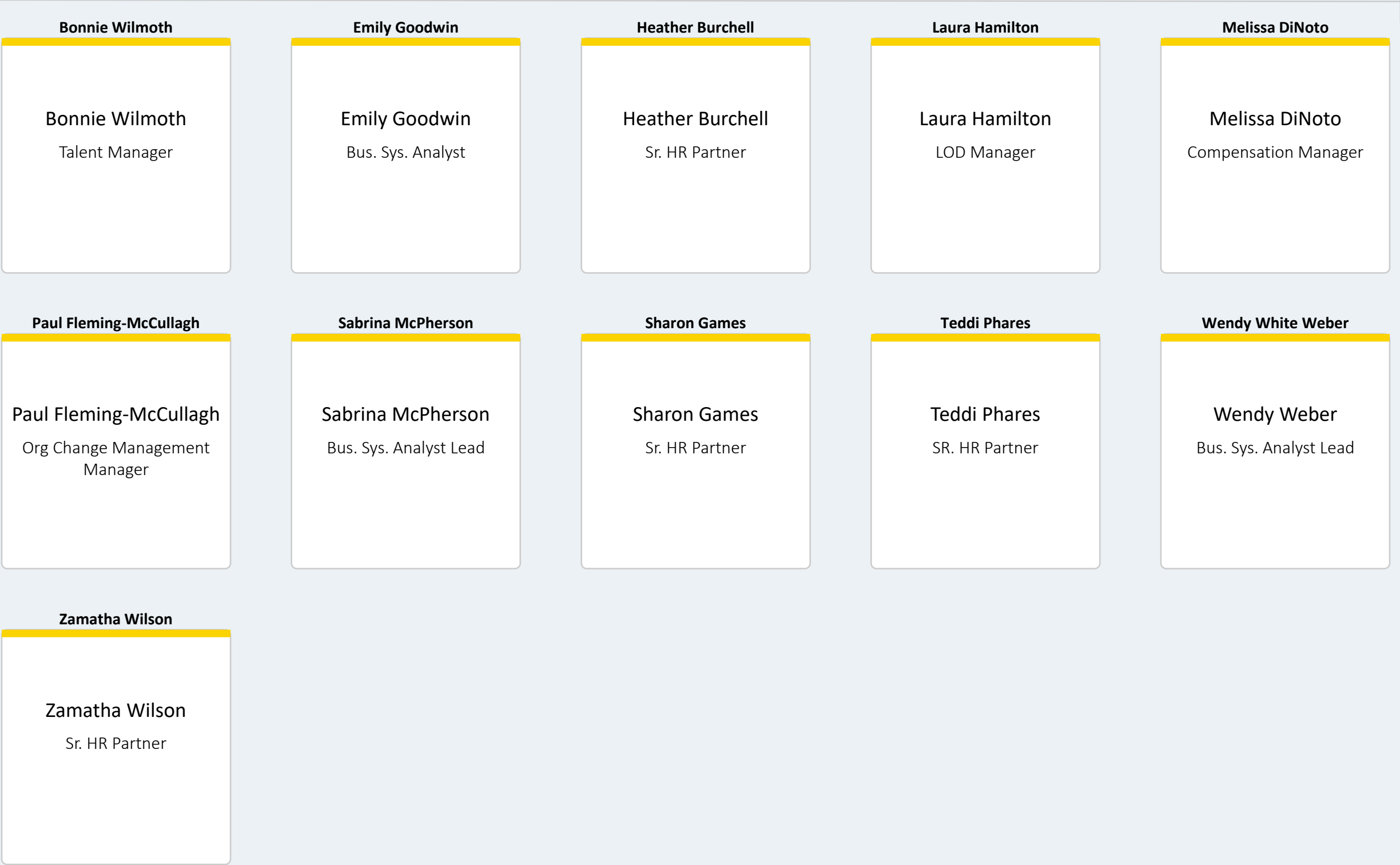
Fiscal Specialist

Lexie Murray

Office Assistant 3

Jennifer Klein

AVP



**Kendra Hsieh**

**Kendra Hsieh**  
Director  
Disability Services  
Labor Relations

Leslie Brunelli ☐

Theresa Elliot-Cheslek ☐

Kendra Hsieh ☒

**Christina Read**  
HR Analyst

**Eliza Schneider**  
HR Assistant

**Jenn Augenstein**  
HR Assistant

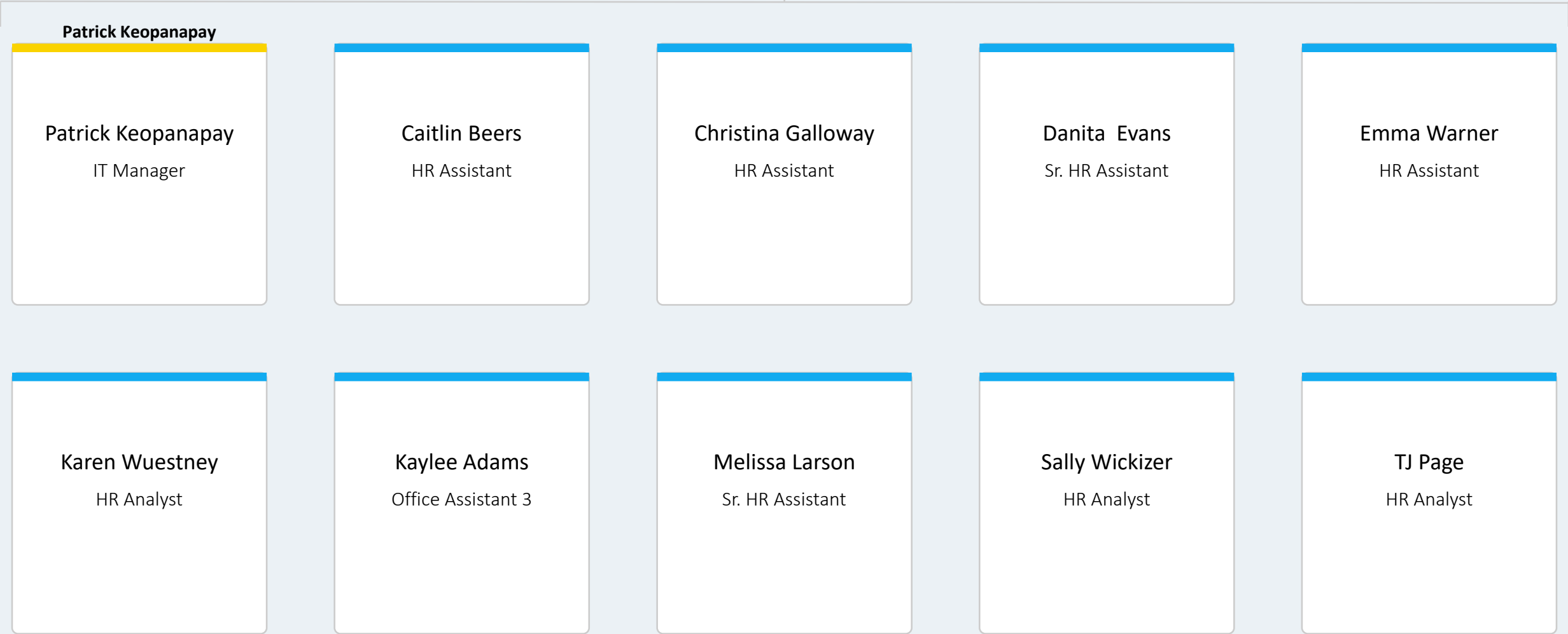
**Jennifer Negrete**  
HR Assistant

**Jessa Latawiec**  
HR Assistant

**Kathleen Hasenoehrl**  
HR Consultant

Lisa Neal

Director



Bonnie Wilmoth

Bonnie Wilmoth

Manager

- Leslie Brunelli ☐
- Theresa Elliot-Cheslek ☐
- Jennifer Klein ☐
- Bonnie Wilmoth ☒

Adelyn Hamrick

HR Assistant



Emily Goodwin

Emily Goodwin

Bus. Sys. Analyst Lead

Leslie Brunelli

Theresa Elliot-Cheslek

Jennifer Klein

Emily Goodwin

Hally Rohla

IT Architecture

Stephanie Krumm

Bus. Sys. Analyst



Heather Burchell

Heather Burchell

Sr. HR Partner

Leslie Brunelli ☐

Theresa Elliot-Cheslek ☐

Jennifer Klein ☐

Heather Burchell ☒

Alex Bevington

HR Consultant

Autumn Marston

HR Assistant

Carla Fitzgerald

HR Consultant

Larkin Mott

HR Assistant



Laura Hamilton

Manager

- Leslie Brunelli ☐
- Theresa Elliot-Cheslek ☐
- Jennifer Klein ☐
- Laura Hamilton ☒

Ariana McDonnell

HR Analyst

Carey Musburger

HR Assistant

Melissa DiNoto

Melissa DiNoto

Compensation Manager

- Leslie Brunelli ☐
- Theresa Elliot-Cheslek ☐
- Jennifer Klein ☐
- Melissa DiNoto ☒

Joel Peterson

HR Consultant



Paul Fleming-McCullagh

Paul Fleming-McCullagh

Manager

- Leslie Brunelli ☐
- Theresa Elliot-Cheslek ☐
- Jennifer Klein ☐
- Paul Fleming-McCullagh ☒

Emily Akin

PR/Comm. Coord



Sabrina McPherson

Sabrina McPherson

Bus. Sys. Analyst Lead

Leslie Brunelli ☐

Theresa Elliot-Cheslek ☐

Jennifer Klein ☐

Sabrina McPherson ☒

Cenobina Patterson

Bus. Sys. Analyst

Jim Lowery

Bus. Sys. Analyst

Joe Wagner

Bus. Sys. Analyst

Sharon Games

Sharon Games

Sr. HR Partner

Leslie Brunelli ☐

Theresa Elliot-Cheslek ☐

Jennifer Klein ☐

Sharon Games ☒

Erin Kennelly

Sr. HR Assistant

**Teddi Phares**

**Teddi Phares**

Sr. HR Partner

Leslie Brunelli ☐

Theresa Elliot-Cheslek ☐

Jennifer Klein ☐

Teddi Phares ☒

**Emily Christensen**

HR Analyst

**Jamar Pelletier**

HR Assistant

**Mikki Nutt**

HR Consultant



Wendy Weber

Wendy Weber

Bus. Sys. Analyst Lead

Leslie Brunelli

Theresa Elliot-Cheslek

Jennifer Klein

Wendy Weber

Steven Perkins

Bus. Sys. Analyst



Zamatha Wilson

Zamatha Wilson

Sr. HR Partner

- Leslie Brunelli ☐
- Theresa Elliot-Cheslek ☐
- Jennifer Klein ☐
- Zamatha Wilson ☒

Brizeyda Martinez-Sanchez

Sr. HR Assistant

Kaitlin Morehouse

HR Consultant

Melissa Pond

HR Consultant

Tehra Farmerie

HR Assistant

Patrick Keopanapay

Patrick Keopanapay

IT Manager

- Leslie Brunelli ☐
- Theresa Elliot-Cheslek ☐
- Lisa Neal ☐
- Patrick Keopanapay ☒

Adam Turner

IT Web Support

William Phung

IT Support